

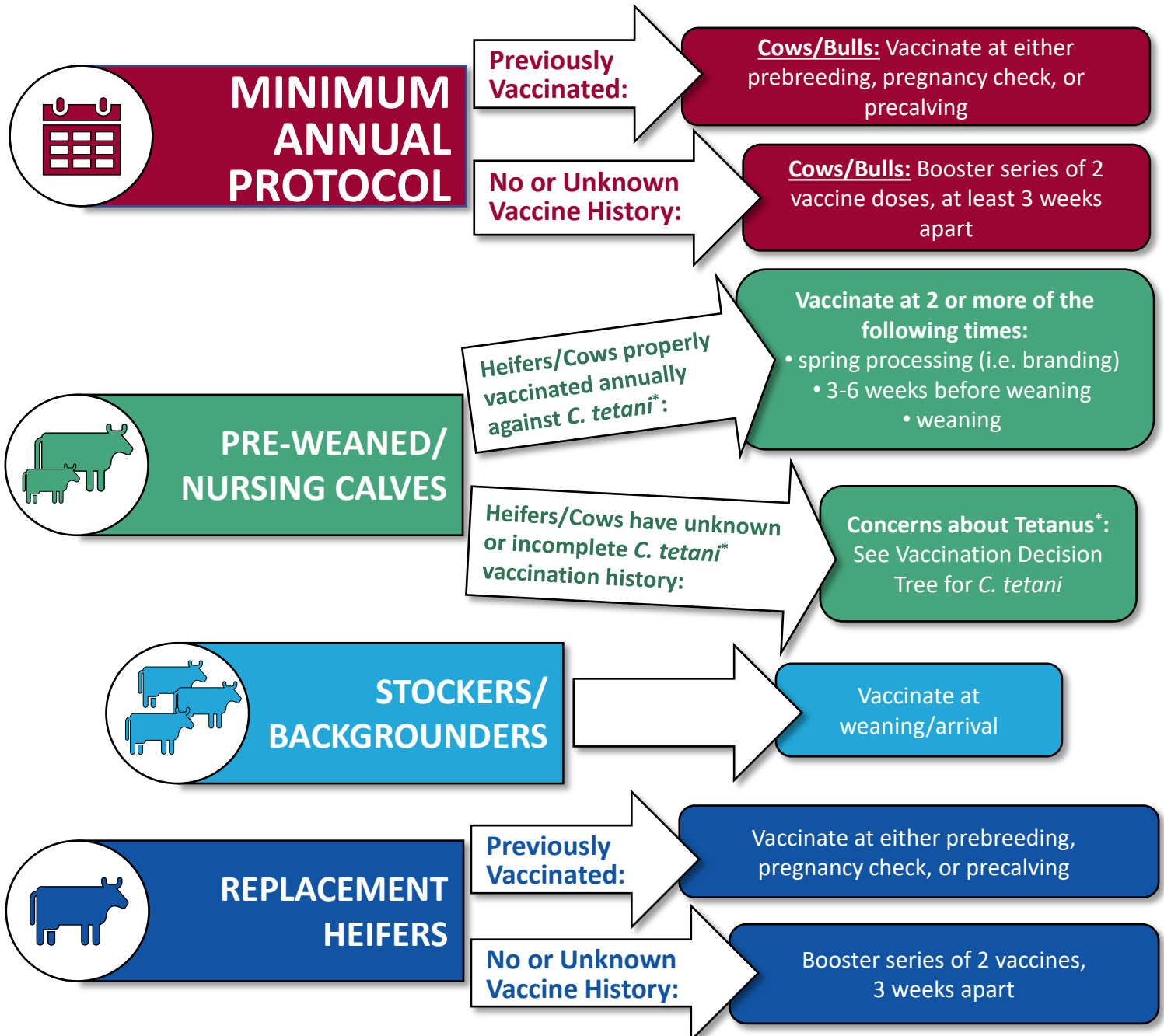
Core Vaccination Guidelines

CLOSTRIDIAL BACTERIA

(*Clostridium chauvoei*, *C. septicum*, *C. novyi*,
C. sordelli, and *C. perfringens* Type B, C, & D)

(*C. hemolyticum* and *C. tetani** are considered risk-based vaccines)

Vaccines should always be given according to label instructions.



This document provides **general guidelines** for vaccine use in cow-calf herds.

Specific recommendations for your operation should be discussed with **your veterinarian**.

